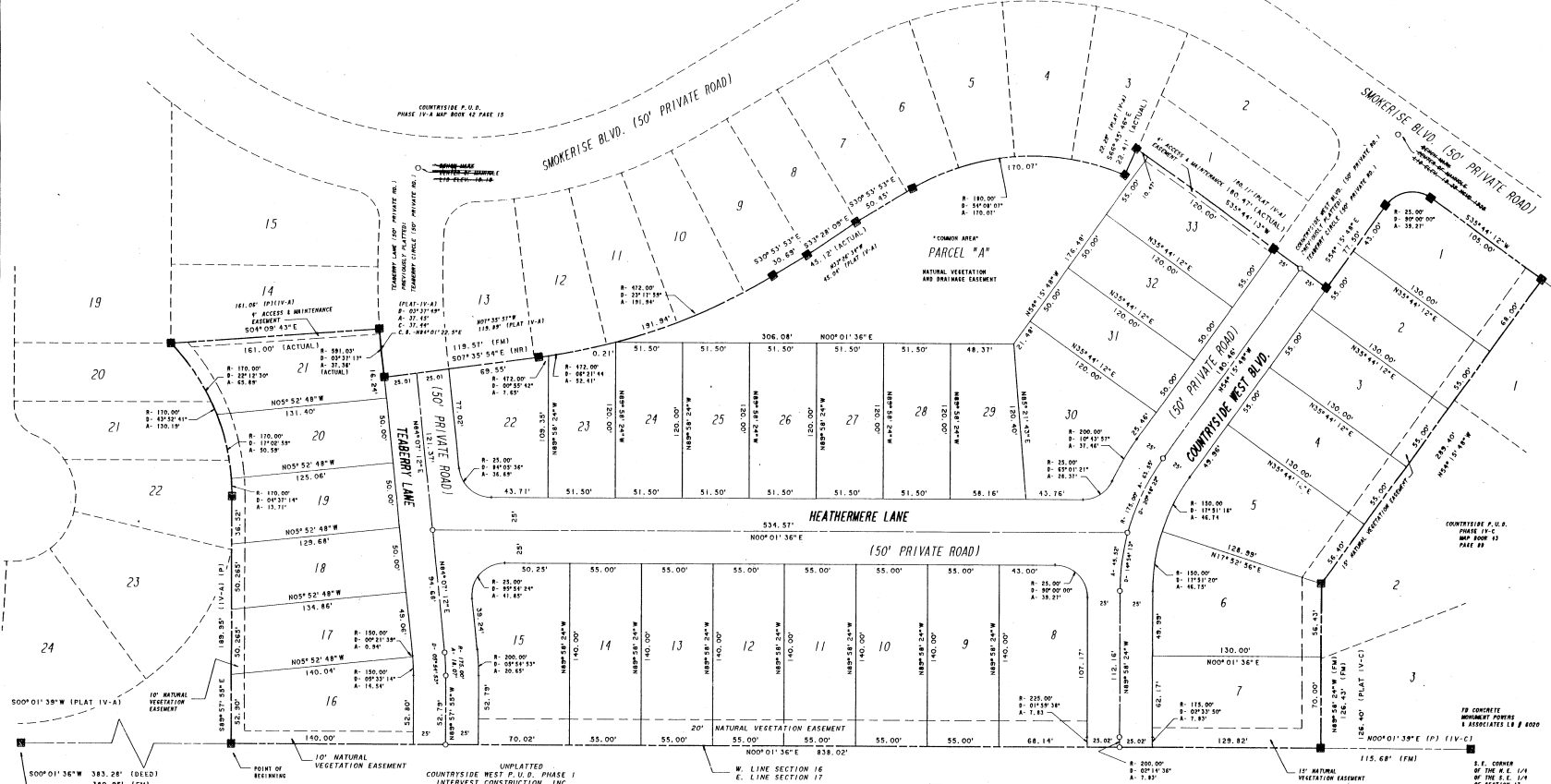
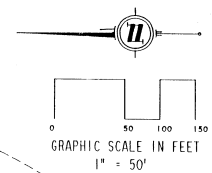


COUNTRYSIDE P. U. D., PHASE IV-B

SECTION 16, TOWNSHIP 16 SOUTH, RANGE 33 EAST
CITY OF PORT ORANGE, VOLUSIA COUNTY, FLORIDA



POINT OF REFERENCE
SOUTHWEST CORNER OF
COUNTRYSIDE P. U. D.
UNIT 111111 MAP BOOK
41 PAGES 91 AND 92

BUILDING SETBACK REQUIREMENTS

FRONT YARD SETBACK 20 FT. MINIMUM
REAR YARD SETBACK 20 FT. MINIMUM
REAR YARD SETBACK FOR SWIMMING POOL, PORCH OR PATIO 10 FT. MINIMUM
SIDE YARD SETBACK 5 FT. MINIMUM

ADDITIONAL EASEMENT NOTE

THIS PLAT IS SUBJECT TO ALL EASEMENTS OF RECORD, RESERVATIONS OF EASEMENTS INCLUDING, BUT NOT LIMITED TO, AN EASEMENT TWELVE (12) FEET WIDE ALONG THE FRONT AND FIVE (5) FEET ALONG THE SIDE OF ALL LOTS FOR THE INSTALLATION AND MAINTENANCE OF UTILITIES AND DRAINAGE FACILITIES, UNLESS OTHERWISE SHOWN.

NOTE

THERE MAY BE ADDITIONAL RESTRICTIONS THAT ARE NOT SHOWN ON THIS PLAT THAT MAY BE FOUND IN THE PUBLIC RECORDS OF VOLUSIA COUNTY, FLORIDA.

LEGEND:

P (PLAT)
R DENOTES RADIUS
D DENOTES DELTA
A DENOTES ANGLE

NOTE: ALL LOT LINES ARE RADIAL TO CURVES UNLESS OTHERWISE INDICATED.

■ DENOTES PERMANENT REFERENCE MONUMENT STAMPED LB # 6020

○ DENOTES PERMANENT CONTROL POINT TO BE SET AFTER PAVEMENT IS INSTALLED.

LOT	RADIUS	DELTA	ARC	CHORD	CHORD BEARING
1	25.00'	089°59'58"	39.27'	35.36'	N08°15'48"W
2	5	150.00'	017°51'16"	46.74'	N63°11'26"W
3	6	150.00'	017°51'20"	46.75'	N61°02'44"W
4	8	25.00'	090°00'00"	39.27'	N65°01'36"E
5	15	200.00'	005°54'53"	20.65'	N87°04'39"E
6	15	25.00'	085°54'24"	41.85'	N77°55'36"W
7	16	150.00'	005°31'14"	14.54'	N87°15'24"E
8	17	150.00'	000°21'39"	0.94'	N84°18'01"E
9	19	170.00'	004°38'14"	13.71'	N87°43'28"E
10	20	170.00'	017°02'59"	50.59'	N76°53'24"E
11	21	591.03'	003°26'11"	35.45'	N84°07'12"E
12	21	170.00'	024°12'30"	55.48'	N87°15'38"E
13	22	472.00'	000°55'42"	7.65'	N08°03'46"W
14	22	25.00'	084°09'58"	36.89'	N42°04'24"E
15	23	472.00'	005°31'14"	52.41'	N11°42'28"W
16	30	300.00'	010°43'57"	37.46'	N59°37'46"W
17	30	25.00'	085°01'21"	28.37'	N62°28'04"W
18	A	470.00'	016°55'54"	138.89'	N22°25'56"W
19	A	180.00'	054°09'11"	170.13'	N03°50'22"W
20	C/L	175.00'	009°48'22"	63.54'	N64°39'59"W
21	C/L	175.00'	014°54'13"	45.52'	N82°31'17"W
22	C/L	200.00'	002°14'36"	7.83'	N88°54'18"E
23	C/L	175.00'	005°54'53"	18.07'	N87°04'39"E
24	P/L	170.00'	043°52'41"	130.18'	N68°05'45"E
25	P/L	591.03'	005°31'14"	37.30'	N84°01'40"W
26	P/L	472.00'	023°17'58"	181.84'	N18°14'54"E
27	P/L	180.00'	084°08'07"	170.07'	N03°49'30"E
28	P/L	25.00'	084°58'07"	39.27'	N03°15'48"W

RECORDS OF VOLUSIA COUNTY, FLORIDA, PHASE IV-B, MAP BOOK 44, PAGES 91 AND 92, PLAT 19-A, 19-B, 19-C, 19-D, 19-E, 19-F, 19-G, 19-H, 19-I, 19-J, 19-K, 19-L, 19-M, 19-N, 19-O, 19-P, 19-Q, 19-R, 19-S, 19-T, 19-U, 19-V, 19-W, 19-X, 19-Y, 19-Z, 19-AA, 19-AB, 19-AC, 19-AD, 19-AE, 19-AF, 19-AG, 19-AH, 19-AI, 19-AJ, 19-AK, 19-AL, 19-AM, 19-AN, 19-AO, 19-AP, 19-AQ, 19-AR, 19-AS, 19-AT, 19-AU, 19-AV, 19-AW, 19-AX, 19-AY, 19-AZ, 19-BA, 19-BB, 19-BC, 19-BD, 19-BE, 19-BF, 19-BG, 19-BH, 19-BI, 19-BJ, 19-BK, 19-BL, 19-BM, 19-BN, 19-BO, 19-BP, 19-BQ, 19-BR, 19-BS, 19-BT, 19-BU, 19-BV, 19-BW, 19-BX, 19-BY, 19-BZ, 19-CA, 19-CB, 19-CC, 19-CD, 19-CE, 19-CF, 19-CG, 19-CH, 19-CI, 19-CJ, 19-CK, 19-CL, 19-CM, 19-CN, 19-CO, 19-CP, 19-CQ, 19-CR, 19-CS, 19-CT, 19-CU, 19-CV, 19-CW, 19-CX, 19-CY, 19-CZ, 19-DA, 19-DB, 19-DC, 19-DD, 19-DE, 19-DF, 19-DG, 19-DH, 19-DI, 19-DJ, 19-DK, 19-DM, 19-DN, 19-DO, 19-DP, 19-DQ, 19-DR, 19-DS, 19-DT, 19-DU, 19-DV, 19-DW, 19-DX, 19-DY, 19-DZ, 19-EA, 19-EB, 19-EC, 19-ED, 19-EE, 19-EF, 19-EG, 19-EH, 19-EI, 19-EJ, 19-EK, 19-EL, 19-EM, 19-EN, 19-EO, 19-EP, 19-EQ, 19-ER, 19-ES, 19-ET, 19-EU, 19-EV, 19-EW, 19-EX, 19-EY, 19-EZ, 19-FA, 19-FB, 19-FC, 19-FD, 19-FE, 19-FG, 19-FH, 19-FI, 19-FJ, 19-FK, 19-FL, 19-FM, 19-FN, 19-FO, 19-FP, 19-FQ, 19-FR, 19-FS, 19-FT, 19-FU, 19-FV, 19-FW, 19-FX, 19-FY, 19-FZ, 19-GA, 19-GB, 19-GC, 19-GD, 19-GE, 19-GF, 19-GG, 19-GH, 19-GI, 19-GJ, 19-GK, 19-GL, 19-GM, 19-GN, 19-GO, 19-GP, 19-GQ, 19-GR, 19-GS, 19-GT, 19-GU, 19-GV, 19-GW, 19-GX, 19-GY, 19-GZ, 19-HA, 19-HB, 19-HC, 19-HD, 19-HE, 19-HF, 19-HG, 19-HI, 19-HJ, 19-HK, 19-HL, 19-HM, 19-HN, 19-HO, 19-HP, 19-HQ, 19-HR, 19-HS, 19-HT, 19-HU, 19-HV, 19-HW, 19-HX, 19-HY, 19-HZ, 19-IA, 19-IB, 19-IC, 19-ID, 19-IE, 19-IF, 19-IG, 19-IH, 19-II, 19-IJ, 19-IK, 19-IL, 19-IM, 19-IN, 19-IO, 19-IP, 19-IQ, 19-IR, 19-IS, 19-IT, 19-IU, 19-IV, 19-IW, 19-IX, 19-IY, 19-IZ, 19-JA, 19-JB, 19-JC, 19-JD, 19-JE, 19-JF, 19-JG, 19-JH, 19-JI, 19-JJ, 19-JK, 19-JL, 19-JM, 19-JN, 19-JO, 19-JP, 19-JQ, 19-JR, 19-JS, 19-JT, 19-JU, 19-JV, 19-JW, 19-JX, 19-JY, 19-JZ, 19-KA, 19-KB, 19-KC, 19-KD, 19-KE, 19-KF, 19-KG, 19-KH, 19-KI, 19-KJ, 19-KK, 19-KL, 19-KM, 19-KN, 19-KO, 19-KP, 19-KQ, 19-KR, 19-KS, 19-KT, 19-KU, 19-KV, 19-KW, 19-KX, 19-KY, 19-KZ, 19-LA, 19-LB, 19-LC, 19-LD, 19-LE, 19-LF, 19-LG, 19-LH, 19-LI, 19-LJ, 19-LK, 19-LL, 19-LM, 19-LN, 19-LO, 19-LP, 19-LQ, 19-LR, 19-LS, 19-LT, 19-LU, 19-LV, 19-LW, 19-LX, 19-LY, 19-LZ, 19-MA, 19-MB, 19-MC, 19-MD, 19-ME, 19-MF, 19-MG, 19-MH, 19-MI, 19-MJ, 19-MK, 19-ML, 19-MN, 19-MO, 19-MP, 19-MQ, 19-MR, 19-MS, 19-MT, 19-MU, 19-MV, 19-MW, 19-MX, 19-MY, 19-MZ, 19-NA, 19-NB, 19-NC, 19-ND, 19-NE, 19-NF, 19-NG, 19-NH, 19-NI, 19-NJ, 19-NK, 19-NL, 19-NM, 19-NO, 19-NP, 19-NQ, 19-NR, 19-NS, 19-NT, 19-NU, 19-NV, 19-NW, 19-NX, 19-NY, 19-NZ, 19-OA, 19-OB, 19-OC, 19-OD, 19-OE, 19-OF, 19-OG, 19-OH, 19-OI, 19-OJ, 19-OK, 19-OL, 19-OM, 19-ON, 19-OO, 19-OP, 19-OQ, 19-OR, 19-OS, 19-OT, 19-OU, 19-OV, 19-OW, 19-OX, 19-OY, 19-OZ, 19-PA, 19-PB, 19-PC, 19-PD, 19-PE, 19-PF, 19-PG, 19-PH, 19-PI, 19-PJ, 19-PK, 19-PL, 19-PM, 19-PN, 19-PO, 19-PP, 19-PQ, 19-PR, 19-PS, 19-PT, 19-PU, 19-PV, 19-PW, 19-PX, 19-PY, 19-PZ, 19-QA, 19-QB, 19-QC, 19-QD, 19-QE, 19-QF, 19-QG, 19-QH, 19-QI, 19-QJ, 19-QK, 19-QL, 19-QM, 19-QN, 19-QO, 19-QP, 19-QL, 19-QR, 19-QS, 19-QU, 19-QV, 19-QW, 19-QX, 19-QY, 19-QZ, 19-RA, 19-RB, 19-RC, 19-RD, 19-RE, 19-RF, 19-RG, 19-RH, 19-RI, 19-RJ, 19-RK, 19-RL, 19-RM, 19-RN, 19-RO, 19-RR, 19-RS, 19-RT, 19-RU, 19-RV, 19-RW, 19-RX, 19-RY, 19-RZ, 19-SA, 19-SB, 19-SC, 19-SD, 19-SE, 19-SF, 19-SG, 19-SH, 19-SI, 19-SJ, 19-SK, 19-SL, 19-SM, 19-SN, 19-SO, 19-SS, 19-ST, 19-SU, 19-SV, 19-SW, 19-SX, 19-SY, 19-SZ, 19-TA, 19-TB, 19-TC, 19-TD, 19-TE, 19-TF, 19-TG, 19-TH, 19-TI, 19-TJ, 19-TK, 19-TL, 19-TM, 19-TN, 19-TO, 19-TP, 19-TQ, 19-TR, 19-TS, 19-TU, 19-TV, 19-TW, 19-TX, 19-TY, 19-TZ, 19-UA, 19-UB, 19-UC, 19-UD, 19-UE, 19-UF, 19-UG, 19-UH, 19-UI, 19-UJ, 19-UK, 19-UL, 19-UM, 19-UN, 19-UO, 19-UP, 19-UQ, 19-UR, 19-US, 19-UT, 19-UU, 19-UV, 19-UW, 19-UX, 19-UY, 19-UZ, 19-VA, 19-VB, 19-VC, 19-VD, 19-VE, 19-VF, 19-VG, 19-VH, 19-VI, 19-VJ, 19-VK, 19-VL, 19-VM, 19-VN, 19-VO, 19-VP, 19-VQ, 19-VR, 19-VS, 19-VT, 19-VU, 19-VV, 19-VW, 19-VX, 19-VY, 19-VZ, 19-WA, 19-WB, 19-WC, 19-WD, 19-WE, 19-WF, 19-WG, 19-WH, 19-WI, 19-WJ, 19-WK, 19-WL, 19-WM, 19-WN, 19-WO, 19-WP, 19-WQ, 19-WR, 19-WS, 19-WT, 19-WU, 19-WV, 19-WW, 19-WX, 19-WY, 19-WZ, 19-XA, 19-XB, 19-XC, 19-XD, 19-XE, 19-XF, 19-XG, 19-XH, 19-XI, 19-XJ, 19-XK, 19-XL, 19-XM, 19-XN, 19-XO, 19-XP, 19-XQ, 19-XR, 19-XS, 19-XT, 19-XU, 19-XV, 19-XW, 19-XX, 19-XY, 19-XZ, 19-YA, 19-YB, 19-YC, 19-YD, 19-YE, 19-YF, 19-YG, 19-YH, 19-YI, 19-YJ, 19-YK, 19-YL, 19-YM, 19-YN, 19-YO, 19-YP, 19-YQ, 19-YR, 19-YS, 19-YT, 19-YU, 19-YV, 19-YW, 19-YX, 19-YY, 19-YZ, 19-ZA, 19-ZB, 19-ZC, 19-ZD, 19-ZE, 19-ZF, 19-ZG, 19-ZH, 19-ZI, 19-ZJ, 19-ZK, 19-ZL, 19-ZM, 19-ZN, 19-ZO, 19-ZP, 19-ZQ, 19-ZR, 19-ZS, 19-ZT, 19-ZU, 19-ZV, 19-ZW, 19-ZX, 19-ZY, 19-ZZ

PREPARED BY

POWERS & ASSOCIATES

1402 DUNLAP AVE. SUITE A, PORT ORANGE, FL 32127 (904) 322-0916 FAX (904) 322-0914